



"We meet all your language needs"

Address: Level 4, Suite 402, 332 Pitt Street, Sydney NSW 2000

Phone: (02) 9283 9892 – 0430015773

Email: info@sydneylanguagesolutions.com.au

Website: www.sydneylanguagesolutions.com.au

Contents

Company Profile	3
Why SLS?	4
Language Services	5
Translation & Interpreting	6
Languages	7
Calligraphy Workshop	8
Travel Workshop	9
Courses	10
Levels of Language Courses ...	11
JLPT Test	12
English Courses	13
OET Preparation Course	14
IELTS Preparation Course	15
Meet Our Clients	16
Case Study	17
Meet Our Students	18
Meet Our Students	19
Meet Our Teachers	20
Meet Our Teachers	21
Frequently Asked Questions	22
Contact Detailed	23
Enrolment Form	24

Our Company

SLS is managed by professional linguists and language teachers who offer best-practice language services. Director, Dr Na Pham, and her team have many years of experience in language teaching, translating, interpreting and editing across language, cultural and corporate fields.

Our language trainers and editors are not only native speakers of the language they teach and love the work they do, but they have impressive qualifications together with at least 5 years of teaching experience.

Our translators and interpreters at Sydney Language Solutions are accredited by the National Accreditation Authority for Translators and Interpreters Ltd (NAATI).

What we provide

- Language packages to ALL individual and corporate clients.
- Tailor-made translation, interpreting, language and cross-cultural training solutions in ALL languages.
- Whole language packages in Asian languages for companies
- Many language programs in Asian languages
- Unique 4-hour language workshop for travellers in 3 languages: Chinese, Vietnamese and Japanese
- Individual coaching in the day time for Vietnamese, Mandarin, Cantonese, Japanese, Korean, Indonesian, Hindi, French and Spanish.
- Free access to a language library outside of class times

Our teachers are committed to be

Punctual
Inspiring
Devoted
Professional
Interesting



Why Sydney Language Solutions?

- We are Asian language service specialists.
- We provide a complete suite of Asian language solutions including on-site group training or one-to-one training, translation, editing, website localisation and cultural briefings to corporate and government clients.
- We have many different language programs in Asian Languages.
- We are a Sydney-based school where you can learn two languages in parallel weekly if you are a bi-lingual or tri-lingual person born in Australia.
- We offer on-site teacher support outside of regular class time. Learners can access the mini library and its learning resources for free.

We are a proud member of:



Language Services

Language Training

We offer language training courses in a wide range of languages. We cater to individuals as well as corporate clients.

Cultural Briefing

Sydney Language Solutions has developed considerable expertise in the provision of cultural training programmes. Our cultural briefing courses are short 1 day seminars for groups of 1-15 participants, which examine in depth the critical cultural factors affecting working practices in Asian countries.

English Language Training

We also provide tailor-made English as a Second Language (ESL) training courses to employees from non-English speaking backgrounds to improve their language, cultural and professional skills within an English-speaking company.

Editing

SLS also provide proofreading and editing services to improve in your documents or translations' written English.

On-site one-to-one tutoring

If you cannot find time to come to a night-time language class, you can always make an appointment to learn at our CBD head office during the day for a one-to-one tutoring session (anytime even during lunch times)

Other language-related services

We provide other language-related services such as express translations (where no NAATI accreditation is required but time is the most important factor for the client), website localisations, website translations, video subtitling and voice-overing.

Cross Cultural Workshop

We can provide customised cross-cultural workshops to companies who want to help their staffs improve their cross-cultural communication skill

Bilingual Recruitment

SLS provides bilingual staff recruitment service to any individual or companies who have demand in employing bilingual staff in the following fields: IT, childcare, banking, translating & interpreting, training & customer service

Language Proficiency Testing

Sydney Language Solutions offers language proficiency testing to assess a candidate's speaking, listening, comprehension, and reading skills. Our testing is modeled after the IELTS test and the language tested is the language your company or organisation uses or requires.



Translation & Interpreting

What languages do we translate?

We can translate all languages, but the major languages we usually translate include:

Mandarin - Cantonese - Korean - Japanese - Vietnamese - Indonesian - German - Arabic - French - Russian - Spanish - Italian - Turkish - Thai

What translation services do we provide?

- With our network of high-quality NAATI-accredited translators, we deliver high-quality translations in a timely fashion.
- We can also provide service in editing, typesetting, formatting and back-translation to make sure your documents are well-written before or after translation.
- We translate all kinds of documents, from pro-forma translation, standard texts to long technical documents.

Do we have discount for long technical text?

- For any long technical documents (more than 3000 words) we offer 10% discount of the total price.
- If you translate one source text into more than 2 languages, SLS also offers 10% of the total invoice.

What documents can we translate in 1-2 days?

Birth Certificate
Marriage Certificate
Death Certificate
Police Record Certificate
National Identity Card
Curriculum Vitae
Family Book
Driver License
Educational Qualification
School Record
Academic Transcript, etc.
Reference Letter
Bank Statement

Languages Courses

SLS also provides courses and training in the following languages for individual and corporate clients:

Cantonese

English

Indonesian

Japanese

Korean

Mandarin

Thai

Vietnamese

French

Spanish

Arabic

Burmese

Hindi

Persian

Calligraphy Workshop

- Sydney Language Solutions provides Calligraphy Workshop to corporate and individual clients
- The workshop can be customised to suit the content and program of your company
- The workshop will provide techniques and practice to help language students master calligraphy in their language.
- The workshop can last for 2 hours or 1 day.
- Japanese Calligraphy Workshop
- Mandarin Calligraphy Workshop
- Vietnamese Calligraphy Workshop
- Arabic Calligraphy Workshop
- Persian Calligraphy Workshop



4-hours workshop for travellers



- This workshop is for travellers or visitors who will visit a country in the next 3 months, who want to have a very basic level of the language to ask very simple questions and to have some understanding about the country.
- It is designed for those who do not have time to come to class for 10 consecutive weeks or who just want to have a brief knowledge about the language and culture..
- The workshop participants also watch a **short introductory movie about the country, which shows how to get around, buy items and cross roads etc.**
- You can prepare any questions you have about travelling to Indonesia and we will try our best to inform you.
- We will also hand out the training materials to you, but you can also bring along your Lonely Planet Guide (if you have) on the day. You can also bring a small recorder to record the pronunciation if you like.

HSC Preparation Course



- The HSC course provides complete preparation for HSC Japanese/ Vietnamese/ Mandarin/ Korean/ Spanish/ Indonesian Language and covers the skills and knowledge required in the Stage 6 syllabus for the HSC examination.
- We use all assessment tasks supported by the board of studies and past HSC exam papers including listening CDs in our lessons to intensively support students to prepare for HSC exams.
- We are also in regular contact with high school teachers, which allows us to keep up to date with any changes in curricula and access valuable and current teaching materials.

Courses

Course Type	When	Duration	Class Size	Fee
<i>General</i>		10 weeks	4-8 Students	
Beginners 1	Every month	2 hours per week		\$270
Beginners 2	Every two months or following the previous level			\$290
Pre-inter 1		6:30pm- 08:30pm (tentative)		\$320
Pre-inter 2		Total hours: 20 hours		\$340
Intermediate 1				
Intermediate 2				
Advanced				\$360
<i>Intensive Courses</i>	3 times a year Summer Holiday (17-28 January) 1st week of June 1st week of October	4 weeks 2 hours everyday (weekday only) 4:30pm- 6:30pm (tentative) Total hours: 40 hours	4 Students	Beginners \$400 Pre- intermediate \$600
<i>Travelers Workshops</i>	Saturdays of every month	4-hours work- shop 1:30pm- 5:30pm	10-15 Students	\$80
<i>Japanese Proficiency Language Test</i>	Two times a year	10 weeks 2 hours per week 6:30pm- 08:30pm (tentative) Total hours: 20 hours	8 Students	\$350
<i>Individual Courses</i>	All times	Per arrangement	1 or 2 people	\$50/1 hour/ 1 person \$90/2 hours/ 1 person
<i>Small Groups Courses</i>	All times	Per arrangement	3-5 people	\$100/1 hour for a group of 3-5 people

Levels of the Language Courses

Level	Learning Outcome
Beginners	<ul style="list-style-type: none"> • The learner will be able to understand simple statements and requests within very familiar situations • The learner will be able to respond in short, learned phrases or words • The learner will be able to recognise simple signs • The learner will be able to write simple phrases or words generally related to basic personal information
Pre-intermediate	<ul style="list-style-type: none"> • The learner will be able to generally express and respond to immediate needs sufficient to be understood, where intentions are predictable, and communication is on familiar topics • The learner will be able to use learned phrases and say some simple sentences • The learner will be able to recognise the essentials of short and simple written texts on familiar topics • The learner will be able to write some simple phrases and basic sentences about self and others
Intermediate	<ul style="list-style-type: none"> • The learner will be able to satisfy most daily language needs and hold simple face-to-face conversations on familiar topics • The learner will be able to go beyond basic personal information and survival needs • The learner will be able to understand and write simple texts on familiar topics with sufficient accuracy to conduct social correspondence.

Japanese Language Proficiency Test

Level	Requirement	What will be covered	Suitable for
Japanese Language Proficiency Language Test N3	<p>Has passed N4</p> <p>Has already studied at least 400 hours of Japanese</p> <p>Knows >500 kanji and >3000 vocabularies</p>	<p>Reading Comprehension: analysing written materials and summarising information</p> <p>Listening Comprehension: Understanding orally presented materials such as news reports</p>	Intermediate - Advanced Japanese Learner
Japanese Language Proficiency Language Test N2	<p>Has passed N3</p> <p>Has already studied at least 600 hours of Japanese</p> <p>Knows >800 kanji and >4000 vocabularies.</p>	<p>Reading Comprehension: analysing written materials and summarising information</p> <p>Listening Comprehension: Understanding orally presented materials such as news reports</p>	Advanced Japanese Learner

MORE INFORMATION ABOUT JLPT TEST

We also recommend learners who want to take the JLPT to subscribe to the free online monthly newsletter, OMUSUBI, to receive updates about the JLPT.

<http://www.jpff.org.au/omusubi/subscribe.htm>

English Courses

Level	Course Details
Conversation & Pronunciation (Advanced)	<p>Who is this course for?</p> <ul style="list-style-type: none">• This course aims to improve your vocabulary, your pronunciation and increase the level of fluency and accuracy of your speech through a variety of speaking activities.• You should join this class only if your English level is above Upper Intermediate and need improvement in pronunciation and speech fluency.
Business English	<p>Who is this course for?</p> <ul style="list-style-type: none">• This course will help you to participate in business conversation as well as to compose and read business documents and informal letters.• To join this class, your English level should be English Intermediate.
Grammar Class	<p>Who should join this course?</p> <ul style="list-style-type: none">• Those who want to improve the knowledge of grammatical structures of English sentences for their writing or IELTS exam.
Resume Writing Workshop	<ul style="list-style-type: none">• This one-day workshop is to help you to write a well-presented resume when applying for a job.• The trainer will provide you with tips and strategies to write an impressive resume for yourself. Please bring along both the soft copy and hard copy of your resume to practice writing.

OET Preparation Course



Who is this course for?

This course is designed specifically for all overseas qualified professionals in their country of origin who are required to work in their profession including trained doctors, nurses, dentists, veterinarians or pharmacists.

It is also designed to prepare for your Occupational English Test (for Nursing or Medical Professionals). The course is built based on the health professional language requirements and vocational and language skills to work in the profession.

Entry Requirements:

- The applicants for this program must have completed Senior High School (Year 12 in Australia or equivalent in their country of origin, student should be 18 years of Age)
- Students should have English level with equivalent to IELTS 5.5 or equivalent (for all international applicants whose English is second language)
- We provide OET training for the following professionals: **nursing, doctors, dentists and pharmacists.**

Outcome:

In this course, you will have the opportunity to step forward or take advance level courses in higher educational institutions here in Australia. This course will help you to enhance communication skills and gain fluency level with an insight into the health care industry here.

You will become well-versed in communicating your thoughts and ideas in all medicine-related or medical situations.

Duration:

- The course lasts 5 weeks. Total hours: 50 hours in class and 40 hours for self-study
- Students are required to spend at least 10 hours learning in class and 8 hours for self-study per week to finish all homework at our library
- Students are required to finish 1 final written exam and 1 oral presentation.

IELTS Preparation Course

Program Details

Courses that we offer:

Development and extension of 4 skills – Reading, Writing, Speaking and Listening.

Brief revision of essential grammar elements that are relevant to your IELTS Tests.

Weekly test practice and IELTS Test.

Step-by-step detailed analysis of questions forms and strategies to answer these questions.

Use and provision of support and supplementary materials to develop vocabulary and general knowledge.

Essay marking from IELTS instructors to help you identify your weaknesses in IELTS Writing and how to correct them.

IELTS Weekday Course (up to 3 weeks)

IELTS Weeknight Course (up to 6 weeks)

IELTS Sunday Course (up to 9 weeks)

IELTS Weekday Afternoon Course (up to 9 weeks)

Requirement:

As this is an **Intensive Course**, students are required to follow the following guidelines:

You must spend at least 2 hours of self-study every day to finish your homework (IELTS Practice Test)

- You must put in sufficient effort to fix all the grammatical errors that the teacher points out to you.
- You must attend all the lessons as we will focus on the Strategies and help you with the techniques to do the exam faster and better.



Meet our Clients



Case Study One – Ateco Automotive



Ateco Automotive are the Official Importers & Distributors for Alfa Romeo, Ferrari, Maserati, Citroën, Fiat and Chery vehicles in Australia.

As an Automotive Dealer, ATECO is required to conduct regular business and communications with Mandarin-speaking staff in China. Sydney Language Solutions had provided onsite Mandarin language skills training for ATECO to assist and support staff in improving their Mandarin language skills in a corporate environment.

Case Study Two - Samsung



Samsung is a multinational electronic company which began as a small export business in Taegu, Korea and has grown to become one of the world's leading electronics companies. Specialising in digital appliances and media, semiconductors, memory and system integration, its top quality products and processes are world recognised.

At the Sydney-based Samsung office, staff benefit from being able to communicate confidently and professionally in Korean language with their bilingual staff. Sydney Language Solutions provides Samsung a short twenty hour corporate course for English staff to learn simple conversational Korean language skills.



Case Study Three - Meat & Livestock Australia



Meat & Livestock Australia (MLA) is a producer-owned company working in partnership with industry and government to achieve a profitable and sustainable red meat and livestock (cattle, sheep, goats) industry in Australia. MLA has the unique responsibility of providing marketing and research and development services to over 47,000 producer members and the broader red meat industry to help them meet community and consumer expectations.

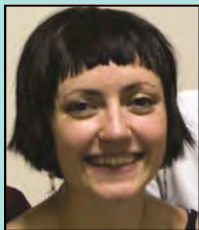
An Indonesian language consultant has been hired to help one of the company's regional managers to master the Indonesian language successfully, for better business communications.

Case Study Four – The Creative Company



A successful brand and design agency with extensive experience in understanding consumer connections to a company, product or service. They deliver engaging communication tools through design, creative thinking, knowledge and insight. Finding it extremely rewarding to deliver a successful brand that increases in market share, recognition and above all equity, they work for a wide range of clients from various industries, helping them to adapt and harness growth.

Meet our Students



Ellen Adele - Vietnamese Student

I started studying with Dr Na Pham ("Cô Na") in 2006. Cô Na's wonderful classes have inspired a love of the Vietnamese language in me, and I hope to continue under her tuition until I am fluent in the language. Cô Na is a patient and thoughtful teacher, and presents often challenging materials in an approachable (and sometimes hilarious!) way.

My partner's family are Vietnamese, and he has also gained a more accurate grasp of his family's language through Cô Na's classes.

Vietnamese is a language that English speakers often struggle with, and Cô Na successfully makes this challenging language accessible to her students of all levels. Through her carefully planned lessons, appropriate materials, engaging interactive activities, and structured homework, Cô Na ensures that students of all levels progress quickly.

I have no hesitation in recommending Cô Na's Vietnamese classes to students of any level.

Danial Daneshvar - OET Preparation Course

"Warm and welcoming staffs, **knowledgeable** and supportive teachers, broad range of useful materials, peaceful and friendly atmosphere."



Dai Vo Nghia - IELTS Preparation Course

"Sydney Language Solutions is a great place to prepare for IELTS. I did improve significantly after taking 2 courses here. I finally manage to get 7.5 at the end. Thank you all SLS teachers. My score is Speaking 7.0 and Listening 7.5 Writing 7.0 & Reading 8.0."

Thuy Van Nguyen - Mandarin Student

"Thank you Sydney Language Solutions for your assistance in my quest to learn Mandarin during July – October 2010. I have thoroughly enjoyed my lessons with my private tutor over the past weeks. I am very satisfied with your professionalism, excellent resources, quality and well-trained staff as well as teaching practices. I was able to learn in a supportive environment with great flexibility and encouragement."



Eman Khan - IELTS Preparation Course

"My name is Eman Khan and I am from an Arabic background, originally from Saudi Arabia. I knew Sydney Language Solutions by accident via their website. At the beginning, I was really frustrated because I need to achieve 7. Na Pham is a greatly motivated English teacher who provided me with smart strategies to improve my writing. Gradually, I became more confident about my writing. I enjoyed the classes and I was really affected by her. Na is a devoted teacher. I was extremely happy when I finally received an overall 7. I will always be grateful to her and I will recommend Sydney Language Solutions to all my friends."

Roger - Indonesian Student

"I found the Beginner's Indonesian course offered by Sydney Language Solutions to be fun and very user friendly. Gerry, the course instructor, is welcoming and enthusiastic; he adapts the course to the specific needs and interests of students and every class included discussion or a short video exploring a different aspect of Indonesian culture. If you're going to Bali soon or interested in the language, this course is a great place to start."

Sandra - Japanese Student

"Thank you for the excellent private Japanese tutoring at Sydney Language Solutions! My tutors were well qualified, extremely helpful, and great teachers. I learnt Japanese faster than I thought was possible, thanks to their excellent teaching methods. The admin staffs were also extremely friendly and helpful."

Meet our Teachers

Na Quynh Phu Pham

Qualifications:

Na Pham has a Doctor in Philosophy (Education) at University of Western Sydney, a Master of Arts in TESOL at National University of Singapore and a Bachelor of Arts at Vietnam National University.

She is also a NAATI Accredited Translator and has Certificates in Project Management, Business Communication and Report Writing, ESL Training and Certificate IV in Assessment and Training.

Na has won several prizes and scholarships, including ASEAN Postgraduate Scholarship - National University of Singapore (1999), International Postgraduate Research Scholarship - University of Western Sydney (2001), Summer Research Award - University of Western Sydney in conjunction with Ethnic Communities Councils of NSW (2005) and Travelling Award - University of Western Sydney (2004, 2005)



Toshiko Jackson

Qualifications:

M.A. in Asian Studies that includes Advanced Studies for teaching Japanese as a Foreign Language, Graduate Diploma in Applied Linguistics, Graduate Diploma in Japanese Applied Linguistics, Diploma in Education and BA in Arts. (All postgraduate degrees are from Monash University.) She has a publication in "Australia Language Matters", ANU, on teaching methods in Japanese. Her M.A. thesis (32,000 words) was on Japanese corporate management and its car manufacturers' overseas activities.



Ashley Jang

Qualifications:

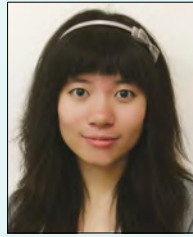
Ashley is doing her Master of Education (TESOL) degree at the University of Sydney. Ashley is a highly qualified teacher who possesses a secondary teacher's license from Department of Education in Korea. Prior to migrating to Australia, she has worked as a tutor and an educational content developer at Hankook University of Foreign Studies (Oedae Language Centre) and YBM Education Korea. Moreover, she has worked as an associate instructor in business English in Seoul for many years.



Cigi Zhong

Qualifications:

Cigi Zhe Zhong received her Bachelor of Education from Harbin Normal University in China . She is doing her Master Degree of education at the University of Sydney . She obtained her teaching licence in China . She is currently working as a Mandarin Teacher at Sydney Language Solutions. Being a good language learner (Cigi can speak Chinese, English, Korean, Japanese very well) greatly helps her to be a good language teacher.



Nicholas John Gysi

Qualifications:

Nicholas has a Bachelor of Arts from University of Western Sydney majoring in History, Politics and Philosophy. He is a qualified English teacher, holding a Cambridge Certificate in English Language Teaching to Adults (CELTA) and also Certificate IV in Teaching English to Speakers of Other Languages (TESOL)



Jaime Baquiran

Qualifications:

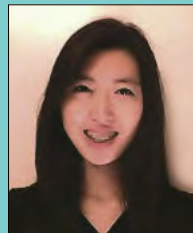
Jaime is a graduate of the University of Sydney, where he obtained a Bachelor of Medical Science with First Class Honours in physiology. He has worked as a research assistant at the Children's Hospital at Westmead within the Children's Cancer Research Unit. Jaime is currently undertaking extra curricular training in teaching principles of nutrition and healthy lifestyle choices to adolescents.



Megan Lee

Qualifications:

Megan is a Medical Science graduate with Honours in microbiology at Sydney University. She also has TESOL certification from International TEFEL teachers training college. Megan has worked previously teaching ESL English to university students at Chungang University and at major learning institutes in Korea such as YBM, CDI and SDA. In Sydney she has taught in James An college, SMART college and Samsung corporate training at Sydney Language Solutions.



Frequently Asked Questions

1. When do courses start?

All beginner courses have one set starting date. Some courses (often intermediate or advanced level) do not have a fixed starting date as they are continuing courses from previous levels.

2. Can I join an existing class if I miss out on the beginner date?

For beginner courses, you should join class from the beginning.

For intermediate or advanced classes, you can join existing classes at various times if you want to start as soon as possible. Although you may start a course halfway through, you will be able to catch up to other classmates as topics may vary each month. If you are not confident that your level is the same as the rest of the class, you can also book 1 or 2 sessions of one-to-one tutoring (at your own expense) to catch up with the rest of the class.

As for the private lessons, you can start anytime as long as we have a teacher and a classroom available!

New course times vary and depend on class size and availability of students at the same level. We obviously do not want to lose students and will try our best to find the most suitable class for you.

3. When are the classes?

Most of our classes (for 4-8 adult learners) are from 6:30pm on week nights. We also have classes during Saturdays and Sundays and workshops for travellers on Sunday afternoons (In the previous time table it said Saturdays???)

If you want to have a one-to-one tutor, you can learn anytime during the day but please book in advance and give us enough time so we can arrange a teacher for you.

4. What is the maximum class size?

The maximum is 8 students in one group. However, the average number of students per class is 6. We do not run classes with more than 8 students, as this limits the chances for you to talk!

5. Can I change the class schedule?

If you are a private lesson student, yes. If you belong to a group, you need to talk with other classmates, the teacher and our staff. If everyone is ok with the change and the classroom is available, you can change the schedule.

6. What happens after I finish the beginner course?

You will have a short test at the end of your course to review all the lessons and test your level. The test will also ensure that you are satisfied with the outcomes of the course. Students are also awarded a Certificate of Participation and are encouraged to continue to the next level with a 10% discount for the next course.

Contact Details

Phone: (02) 9283 9892
Fax: (02) 9283 5754
Mobile: 0430 015 573 - 0433 506 969
Address: Suite 402, 332-336 Pitt St
(for all enquiries, administration, enrolment and classrooms)
Suite 304A, 332 -336 Pitt St (classrooms ONLY)
Email: info@sydneylanguagesolutions.com.au
Website: www.sydneylanguagesolutions.com.au
Skype: [sydney.language.solutions](https://www.skype.com/name/sydney.language.solutions)

Opening Hours:

Monday to Friday

10:30am - 6:30pm (for administration and enrolment)

Saturday 11am - 2:00pm

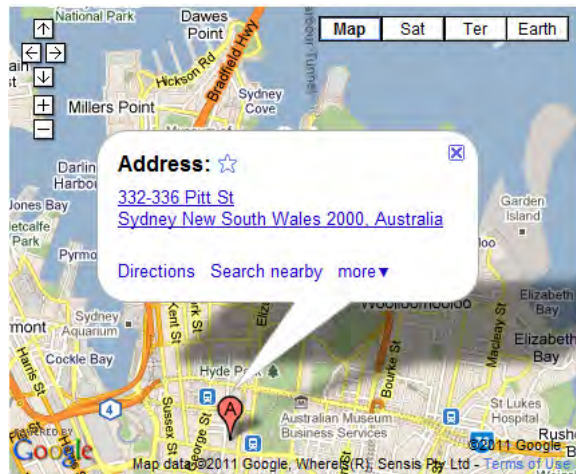
Getting There

By public transport

Take any bus to CBD, Pitt St or George St. You can also take the train to Town Hall Station, Central Station or Museum Station. The building is very close to World Square Building and only 3 minutes walk from these three stations.

By car

Sydney Language Solutions is at the corner of Pitt St and Liverpool St. There are some paid car parks near the building.



ENROLMENT FORM

STUDENT DETAILS

First Name _____
 Last Name _____
 Date of Birth _____
 Phone-day _____
 Mobile _____
 Address _____

 Email _____
Emergency Contact
 Name _____ Phone _____

COURSE DETAILS

Language _____
 Which course you prefer to take?
Level
 Beginner 1 Beginner 2
 Pre-intermediate 1 Pre-intermediate 2
 Intermediate Advanced
Special courses
 Business
 Travel Workshop HSC
 Conversation JPLT
 Starting date _____
 Course Cost _____

First preference of Studying Time _____
 Second preference of Studying Time _____
 Do you want to receive our newsletter? Yes No
 Please indicate any special need of your learning _____

PAYMENT

Do you have 10% Discount? Yes No
 Please select your payment method
 Money Order Cheque Cash Credit Card
 Amount to be paid _____

TERMS and CONDITION

We offer **10% DISCOUNT** for any student enrolling in 2 classes at the same time (either for 2 people or for two consecutive classes)
Enrolment Conditions
 By submitting this Enrolment Form, you offer and agree to purchase a particular course or service for the price specified on Sydney Language Solutions Web Site at the time you enrol.
Payment and Cancellations:
 Full payment is due at the time of enrolment and at least one week before the course starts. We cannot guarantee your place in any class until full payment has been made.
Advised Dates and Times
 The advertised dates and times of courses may change. If there is change in the starting day, you will be informed via your nominated sms, email and telephone contact.
Cancellations and Refund Conditions
 Please choose your course carefully.
 If you cancel the course at least seven days notice before the commencement of the first session of the course, we will refund you with the deduction of \$25 administration fee.
 If you cancel the course less than seven days notice, no refunds will be available. However, *we will arrange for you to study in the next available course* (opening every fortnight) to suit your schedule.
 You are able to change courses up to 48 hours before the commencement of the course you are booked into.
 If you find yourself unable to complete a course, you may put your remaining classes on hold until a later date when you are able to complete it.
Transfers
 You may transfer to another class provided that:
 • There are spaces available in another class
 • There are enough 5 spaces in your class to maintain the class after you leave the current class.
 • It is within the same term as the original enrolment.
Mixing a class:
 If you know you will be unable to attend a class and would like to organise a make-up session (studying with another class of the same level), you are required to give at least 1 week notice to the school.
 If you miss a class, we will do our best to put you in another class to make it up; however this is not always possible, especially with higher-level classes as a limited number of these classes run at any one time.
 No refunds will be given to a class that you missed.

DECLARATION

We declare that the information supplied to Sydney Language Solutions of this application of enrolment is to the best of our understanding and belief.
 We understand that the fees may increase and accept the liability for the payment of all fees as explained in this document, the Sydney Language Solutions brochure or website. I agree to abide by the Terms and Conditions as published and updated on the website from time to time.

SIGNATURE

 Name _____
 Date _____